

# Realtek WHCI EEPROM/Flash Programming Guide (PG730X utility)

## Document Information

	Information
Document ID	
Document Released by	Chris Hsu and Ken Huang
Release Date	06/05/2008
File Name	RTU7305 WHCI EEPROM/Flash Programming Guide (PG730X utility)

## Document History

Version	Issue Date	Changes
0.5	12/19/2007	Initial release
0.6	04/25/2008	Update for WHCI Release 1.0
0.7	06/17/2008	Update for WHCI Release 1.03

## Table of Contents

1	Introduction.....	2
2	Generic Port I/O Driver Installation.....	2
3	Firmware Upgrade .....	2

# 1 Introduction

This document describes the user guide of WHCI firmware programming utility in Windows XP/Vista environment. Card-dependent information such as MAC address can be modified by vendors.

## 2 Generic Port I/O Driver Installation

Copy manually the file genport.sys in the directory of \WHCI Release [version] [date]\ Flash\_EEPROM Utility\PG730X [version]\ to \Windows\System32\Drivers directory.

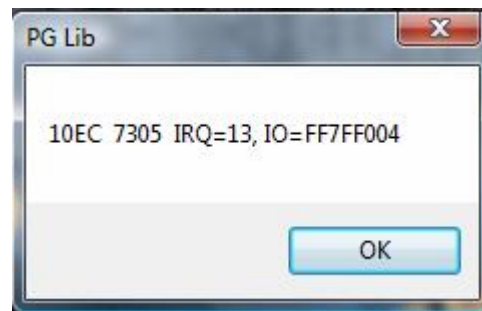
## 3 Firmware Upgrade

Please make sure the WHCI driver package is installed and the WHCI host drivers are shown normally in the device manager window.

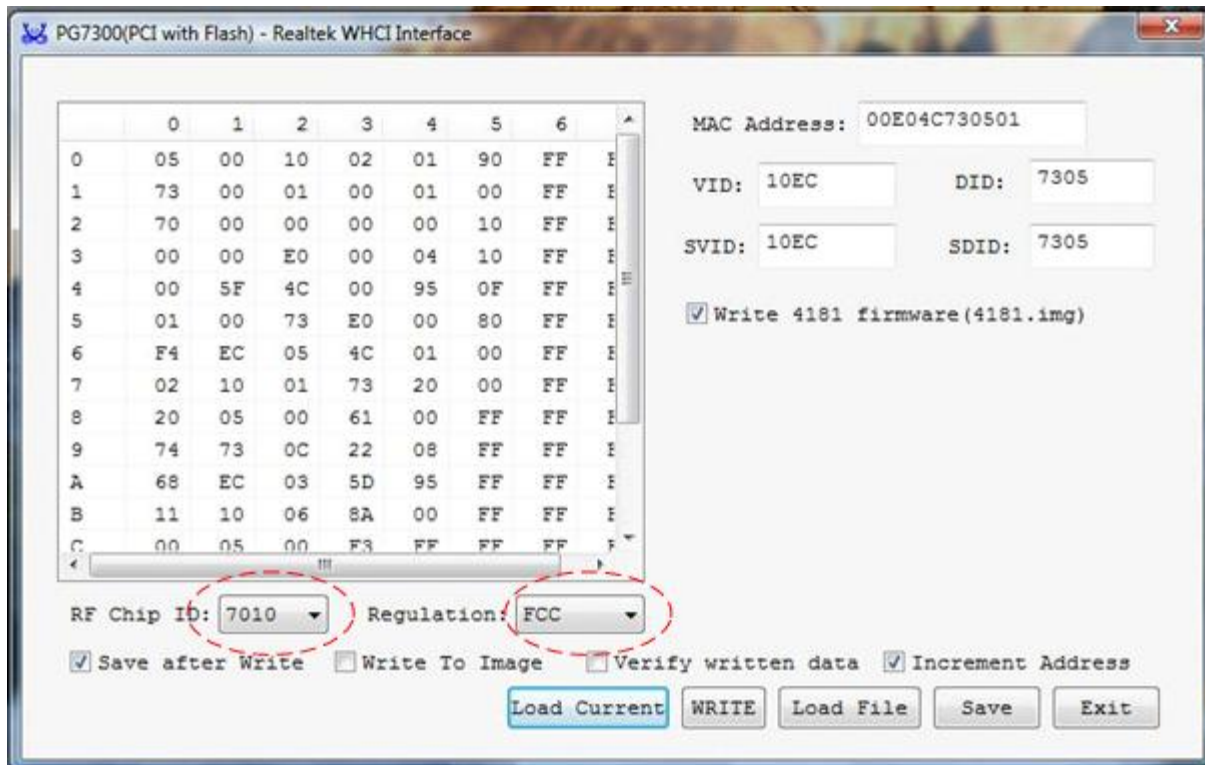
1. Check the module type and regulation support. Then follow the instruction below and execute one of the batch file in \Realtek WHCI Release [version] [date]\Flash\_EEPROM Utility\PG730X v1.23\WUSB

Module	Execution batch file
BG1 FCC module	Execute the batch file "COPY_7010_BG1_FCC.bat"
BG1 TELEC module	Execute the batch file "COPY_7010_BG1_TELEC.bat"
BG1 CE module	Execute the batch file "COPY_7010_BG1_CE.bat"
BG1&3 FCC module	Execute the batch file "COPY_7010_BG1_3_FCC.bat"
BG1&3 TELEC module	Execute the batch file "COPY_7010_BG1_3_TELEC.bat"
BG1&3 CE module	Execute the batch file "COPY_7010_BG1_3_CE.bat"

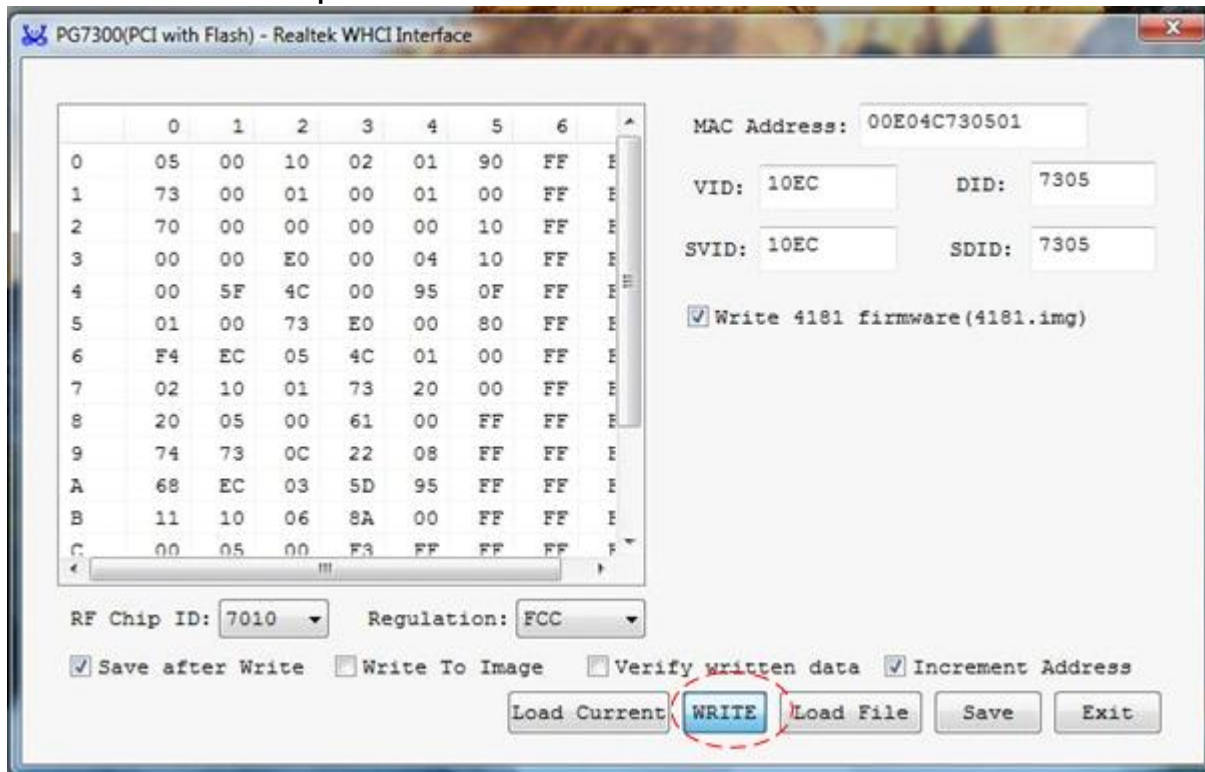
2. Execute PG7305.exe in \WHCI Release [version][date]\ Flash\_EEPROM Utility\PG7305 [version]\WUSB\ directory. Program will detect the WHCI adapter I/O information.



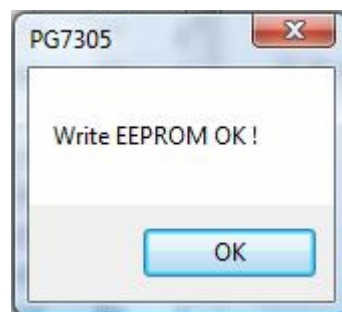
3. Make sure the checkbox of "Write 4181 firmware(4181.img)" is selected.



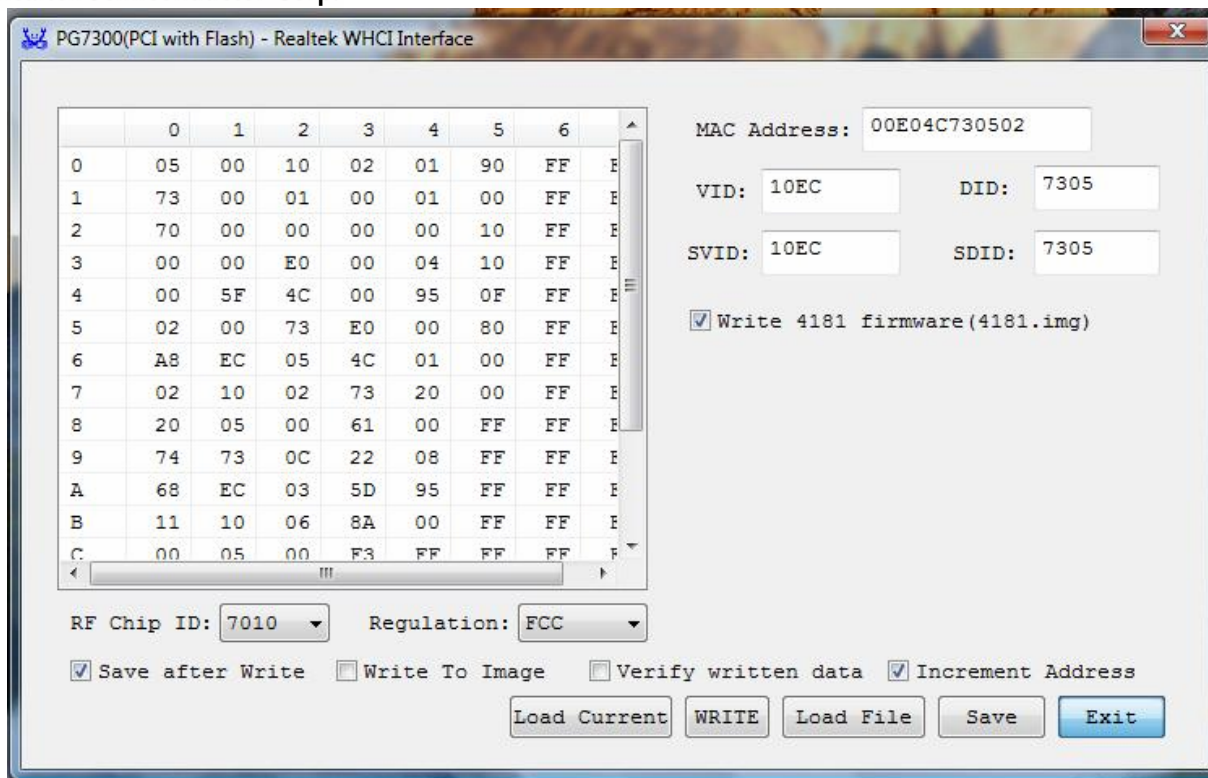
4. Check the module at your hand is RTU7010(BG1) or RTU7012(BG1&3). Also refer to your Realtek contact about the region support(FCC or TELEC) of that module. Then select the appropriate "Chip ID" and "Regulation".
5. Then, click "WRITE" to start WHCI firmware update.



6. During the FW programming, the status is shown on the title bar.
7. If firmware is updated successfully, the following information pops up. Click "OK".



8. Click "Exit" to exit the PG730X utility.



PG7300(PCI with Flash) - Realtek WHCI Interface

	0	1	2	3	4	5	6	
0	05	00	10	02	01	90	FF	E
1	73	00	01	00	01	00	FF	E
2	70	00	00	00	00	10	FF	E
3	00	00	E0	00	04	10	FF	E
4	00	5F	4C	00	95	0F	FF	E
5	02	00	73	E0	00	80	FF	E
6	A8	EC	05	4C	01	00	FF	E
7	02	10	02	73	20	00	FF	E
8	20	05	00	61	00	FF	FF	E
9	74	73	0C	22	08	FF	FF	E
A	68	EC	03	5D	95	FF	FF	E
B	11	10	06	8A	00	FF	FF	E
C	00	05	00	F3	FF	FF	FF	F

MAC Address: 00E04C730502

VID: 10EC DID: 7305

SVID: 10EC SDID: 7305

☒ Write 4181 firmware(4181.img)

RF Chip ID: 7010 Regulation: FCC

☒ Save after Write ☐ Write To Image ☐ Verify written data ☒ Increment Address

Load Current WRITE Load File Save Exit

- Unplug the WHCI adaptor card and plug again or restart the system to activate the new firmware.